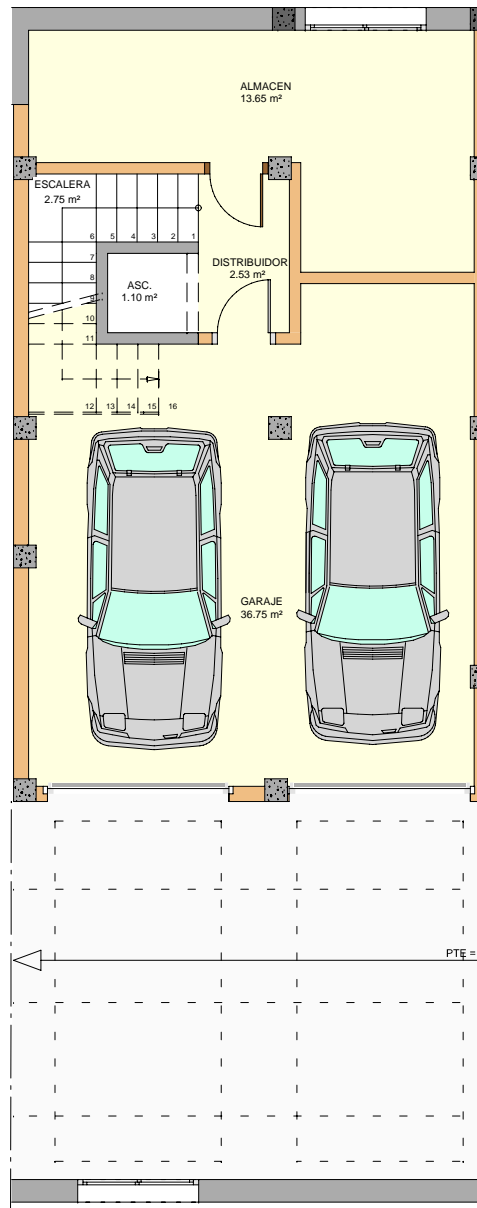
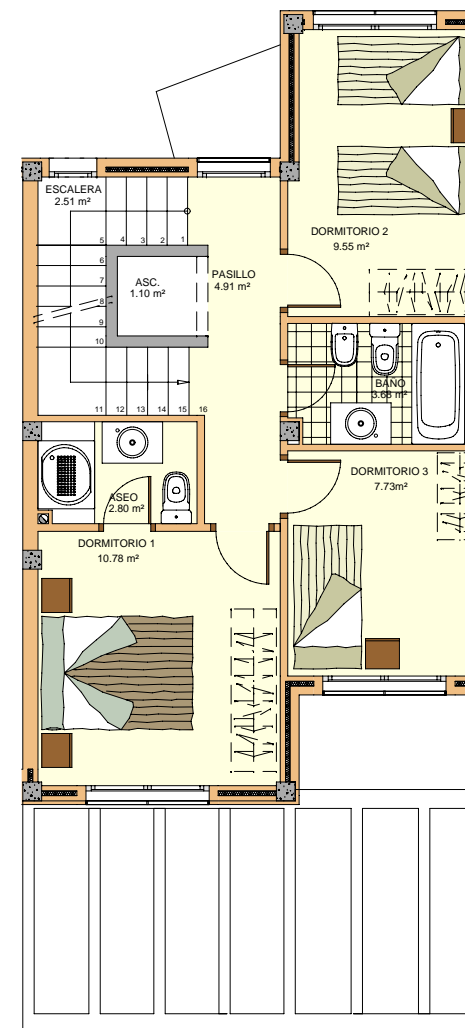


VIVIENDAS EN MANZANA 4 - VIVIENDA UNIFAMILIAR ADOSADA Nº 20

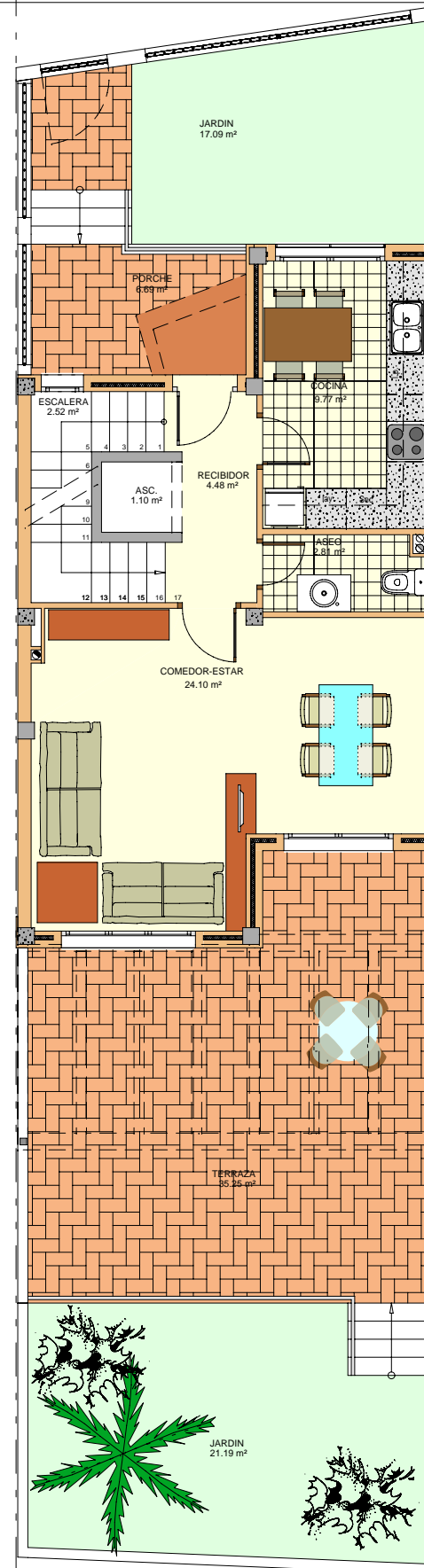
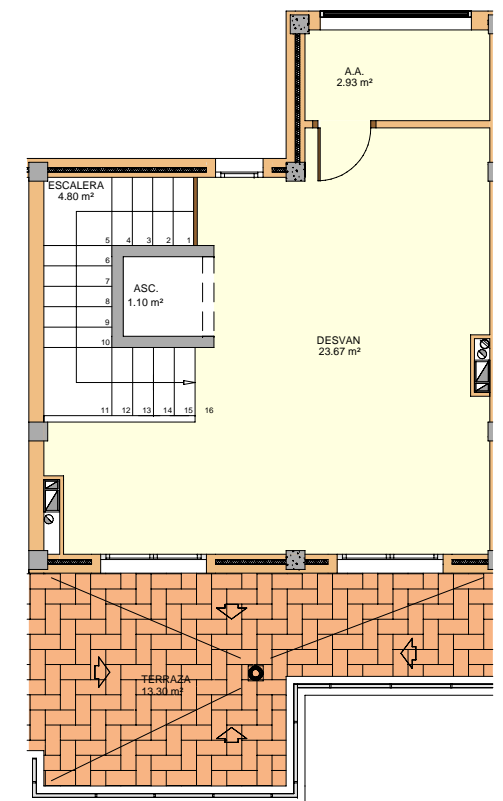
PLANTA SOTANO



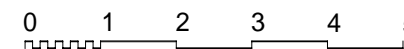
PLANTA PRIMERA



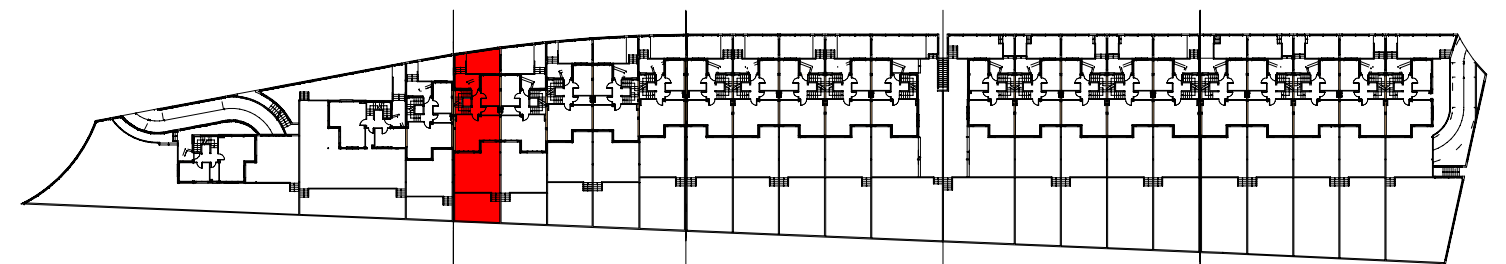
PLANTA BAJO CUBIERTA



PLANTA BAJA



VIVIENDA Nº 20		
PLANTA SOTANO	SUP UTIL	SUP CONST
TOTAL SUP VIV. 20	56,78 m²	64,48 m²
PLANTA BAJA	SUP UTIL	SUP CONST
TOTAL SUP VIV. 20	44,78 m²	54,17 m²
Porche		6,69 m²
Jardin Frente		17,09 m²
Terraza Fondo		35,25 m²
Jardin Fondo		21,19 m²
TOTAL		80,22 m²
PLANTA PRIMERA	SUP UTIL	SUP CONST
TOTAL SUP VIV. 20	43,07 m²	54,17 m²
PLANTA DESVAN	SUP UTIL	SUP CONST
TOTAL SUP VIV. 20	32,50 m²	39,46 m²
Total Parcela 20		141,40 m²
TOTAL SUP. VIVIENDA 20	177,13 m²	212,28 m²



U.M.A. Gestion Integral de Promoción C. V. UNO S.L. BENICARLO (Cs)

TALLER D'ARQUITECTURA MEDITERRANEA . SANTIAGO ESPINOSA SALOMÉ . GASPARD ESPINOSA RUFAT . CARMÉ ESPINOSA RUFAT . ARQUITECTES.
C/VALENCIA Nº16 BAIXOS . BENICARLÓ . 12580 . CASTELLÓ. TEL. 964 46.08.46 FAX 964 46.50.15 . E-MAIL espin-sa@ctac.es , espin-ga@ctac.es , espin-ca@ctac.es